

MAGNATE
STAINLESS STEEL 18-8

Stainless Steel Ware
for **Better Living**

 : +66 8 43873559

 : magnate



MAGNATE



รับผลิตภาชนะสเตนเลสสำหรับอุตสาหกรรมอาหาร
ตามขนาดและรูปแบบที่ต้องการ

SIAM INTERMAGNATE CO., LTD.

139, Romklao Road, Klongsarnpraved, Ladkrabang, Bangkok 10520, Thailand.
Tel : +66-2-360 8710-1, 360 8801, 737 8200 Fax : +66-2-360 8712
Mobile : +66 8 43873559, +66 8 19855521
Email : magnate@siamintm.com / marketing2@siamintm.com / marketing1@siamintm.com
www.siamintm.com

  ISO 8001
REGISTERED ISO 13485

STAINLESS STEEL 18-8

INDUSTRIAL FOOD CONTAINER
KITCHENWARE & CATERING WARE
LABORATORY EQUIPMENT



DEEP RECTANGULAR TRAY



0585

0562 DEEP RECTANGULAR TRAY 11" L292 x W195 x H 50 mm
 0578 DEEP RECTANGULAR TRAY 11" (H 80 mm) L292 x W195 x H 80 mm
 0563 DEEP RECTANGULAR TRAY 13" L335 x W246 x H 55 mm
 0564 DEEP RECTANGULAR TRAY 15" L387 x W272 x H 60 mm
 0579 DEEP RECTANGULAR TRAY 15" (H 80 mm) L387 x W272 x H 80 mm
 0565 DEEP RECTANGULAR TRAY 17" L445 x W281 x H 97 mm
 0566 DEEP RECTANGULAR TRAY 19" L501 x W336 x H101 mm

FOOD CONTAINER (GASTRONORM)



0801 FOOD CONTAINER 1/1
 0802 FOOD CONTAINER 1/1 DEEP
 0803 COVER FOR NO. 0801 & 0802

L530 x W320 x H 65 mm
 L530 x W320 x H100 mm
 L533 x W325 mm

0807 FOOD CONTAINER 1/2
 0808 FOOD CONTAINER 1/2 DEEP
 0809 COVER FOR NO. 0807 & 0808

L321 x W262 x H 65 mm
 L321 x W262 x H100 mm
 L324 x W265 mm

0810 FOOD CONTAINER 1/3
 0811 FOOD CONTAINER 1/3 DEEP
 0812 COVER FOR NO. 0810 & 0811

L324 x W174 x H 65 mm
 L324 x W174 x H100 mm
 L327 x W177 mm

0813 FOOD CONTAINER 1/4
 0814 FOOD CONTAINER 1/4 DEEP
 0815 COVER FOR NO. 0813 & 0814

L262 x W160 x H 65 mm
 L262 x W160 x H100 mm
 L265 x W163 mm

0816 FOOD CONTAINER 1/6
 0817 FOOD CONTAINER 1/6 DEEP
 0818 COVER FOR NO. 0816 & 0817

L177 x W165 x H 65 mm
 L177 x W165 x H100 mm
 L177 x W165 mm

FOOD CONTAINER



0810 FOOD CONTAINER 45 cm
 3021 FOOD CONTAINER 40 cm
 3022 FOOD CONTAINER 35 cm

L450 x W290 x H89 mm
 L400 x W275 x H79 mm
 L350 x W240 x H60 mm

DOUBLE LAYER TRAY



3018 TRAY 500x335x100 mm

L500 x W335 x H100 mm

PERFORATED TRAY



0801P PERFORATED TRAY / FOOD CONTAINER 1/1
 0802P PERFORATED TRAY / FOOD CONTAINER 1/1 DEEP
 0807P PERFORATED TRAY / FOOD CONTAINER 1/2
 0808P PERFORATED TRAY / FOOD CONTAINER 1/2 DEEP
 0810P PERFORATED TRAY / FOOD CONTAINER 1/3
 0811P PERFORATED TRAY / FOOD CONTAINER 1/3 DEEP
 0813P PERFORATED TRAY / FOOD CONTAINER 1/4
 0814P PERFORATED TRAY / FOOD CONTAINER 1/4 DEEP
 0563P PERFORATED DEEP RECTANGULAR TRAY 13"
 0564P PERFORATED DEEP RECTANGULAR TRAY 15"
 0565P PERFORATED DEEP RECTANGULAR TRAY 17"

L530 x W320 x H 65 mm
 L530 x W320 x H100 mm
 L321 x W262 x H 65 mm
 L321 x W262 x H100 mm
 L324 x W174 x H 65 mm
 L324 x W174 x H100 mm
 L262 x W160 x H 65 mm
 L262 x W160 x H100 mm
 L335 x W246 x H 55 mm
 L387 x W272 x H 60 mm
 L445 x W281 x H 95 mm

MAGNATE



FOOD COMPARTMENT TRAY



0705 FOOD COMPARTMENT TRAY

L340 x W250 x H23 mm

SHALLOW TRAY



0553 TRAY 21 x 11 x 0,8 cm

L210 x W110 x H 8 mm



0554 SHALLOW RECTANGULAR TRAY 6 1/2"

L217 x W126 x H12 mm



0556 SHALLOW RECTANGULAR TRAY 9"

L225 x W160 x H14 mm

0557 SHALLOW RECTANGULAR TRAY 11"

L285 x W190 x H18 mm

0558 SHALLOW RECTANGULAR TRAY 13"

L340 x W245 x H19 mm

0559 SHALLOW RECTANGULAR TRAY 15"

L390 x W275 x H19 mm

0560 SHALLOW RECTANGULAR TRAY 17"

L440 x W295 x H19 mm

0561 SHALLOW RECTANGULAR TRAY 19"

L490 x W325 x H19 mm

0601 SHALLOW RECTANGULAR TRAY 21"

L545 x W420 x H22 mm

TRAY



3007 TRAY 6" x 6" x 2"

L223 x W172 x H50 mm



1253 TRAY 30 x 40 x 3,4 cm

L400 x W300 x H34 mm

S/S WELDED TRAY



0568 WELDED LABORATORY TRAY 19 cm

L190 x W140 x H 50 mm

0569 WELDED LABORATORY TRAY 25 cm

L250 x W180 x H 60 mm

0570 WELDED LABORATORY TRAY 26 cm

L260 x W190 x H 50 mm

0571 WELDED LABORATORY TRAY 32 cm

L320 x W260 x H 60 mm

0572 WELDED LABORATORY TRAY 35 cm

L350 x W240 x H 70 mm

0573 WELDED LABORATORY TRAY 40 cm

L400 x W270 x H 80 mm

0574 WELDED LABORATORY TRAY 50 cm

L500 x W330 x H100 mm

0575 WELDED LABORATORY TRAY 62 cm

L620 x W520 x H 70 mm

TRAY



1234 TRAY WITH COVER 21 x 15 cm

1235 TRAY WITH COVER 24 x 18 cm

1236 TRAY WITH COVER 27 x 21 cm

1237 TRAY WITH COVER 30 x 24 cm

1238 TRAY WITH COVER 33 x 27 cm

1239 TRAY WITH COVER 36 x 30 cm



L210 x W150 x H40 mm

L240 x W180 x H40 mm

L270 x W210 x H40 mm

L300 x W240 x H40 mm

L330 x W270 x H40 mm

L360 x W300 x H40 mm

WELDED BOX WITH COVER



3000 WELDED BOX WITH COVER 16 cm

3001 WELDED BOX WITH COVER 20 cm

3002 WELDED BOX WITH COVER 22 cm

3003 WELDED BOX WITH COVER 28 cm

3004 WELDED BOX WITH COVER 30 cm

3005 WELDED BOX WITH COVER 30 cm

3006 WELDED BOX WITH COVER 50 cm

3012 WELDED BOX WITH COVER 18 cm

L160 x W100 x H 30 mm

L200 x W100 x H 50 mm

L220 x W150 x H 50 mm

L260 x W160 x H 60 mm

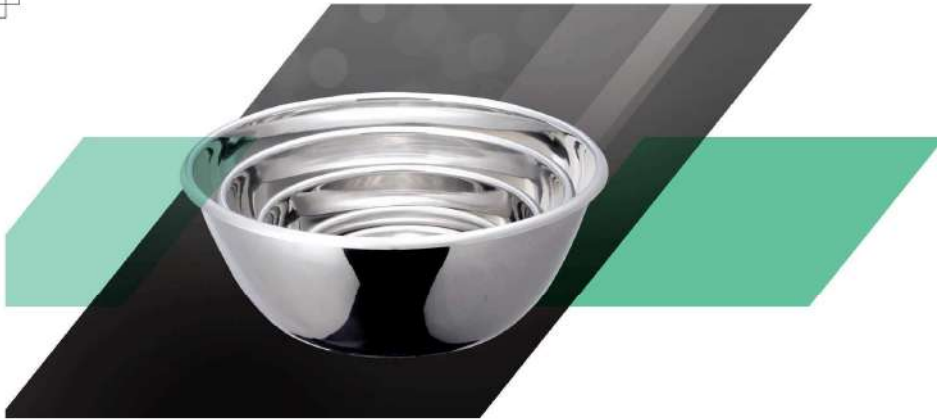
L300 x W150 x H100 mm

L300 x W200 x H 50 mm

L500 x W200 x H 80 mm

L180 x W120 x H 50 mm

MAGNATE



LOTION BOWL



0331 LOTION BOWL 5" Ø 145 x H 55 mm
 0332 LOTION BOWL 6" Ø 174 x H 66 mm
 0333 LOTION BOWL 8" Ø 225 x H 89 mm
 0334 LOTION BOWL 10" Ø 275 x H 111 mm
 0335 LOTION BOWL 12" Ø 328 x H 132 mm
 0336 LOTION BOWL 17" Ø 435 x H 161 mm
 0331CP - 0335CP COVER FOR 0331 - 0335

WASH BASIN & SOLUTION BOWL



0321 WASH BASIN 3 7/8 QT Ø 330 x H 84 mm
 0322 SOLUTION BOWL 5 1/8 QT Ø 308 x H 110 mm
 0323 SOLUTION BOWL 7 QT Ø 355 x H 115 mm

WASH BASIN



1228 SHALLOW WASH BASIN 32 cm Ø 320 x H 80 mm
 1229 WASH BASIN 32 cm Ø 320 x H 105 mm
 1230 WASH BASIN 34 cm Ø 340 x H 100 mm
 1231 WASH BASIN 36 cm Ø 365 x H 115 mm

PERFORATED BOWL & BASIN



0323P PERFORATED SOLUTION BOWL 5 1/8 QT
 0323P PERFORATED SOLUTION BOWL 7 QT
 0333P PERFORATED LOTION BOWL 8"
 1231P PERFORATED WASH BASIN 36 cm

Ø 308 x H 110 mm
 Ø 355 x H 115 mm
 Ø 225 x H 90 mm
 Ø 365 x H 115 mm

CUP



0351 CUP 2 OZ
 0352 CUP 6 OZ
 0353 CUP 14 OZ

Ø 60 x H 30 mm
 Ø 83 x H 55 mm
 Ø 120 x H 60 mm

SPONGE BOWL



0301 BOWL 10 cm, 3/8 QT
 0302 BOWL 12 cm, 5/8 QT
 0303 BOWL 14 cm, 7/8 QT
 0304 BOWL 16 cm, 1 3/8 QT
 0305 BOWL 18 cm, 1 7/8 QT

Ø 108 x H 50 mm
 Ø 133 x H 58 mm
 Ø 145 x H 60 mm
 Ø 167 x H 70 mm
 Ø 185 x H 80 mm

TUMBLER



0341 CUP
 0342 CUP 2 OZ

Ø 48 x H 30 mm
 Ø 52 x H 50 mm

0381 TUMBLER 5 OZ
 0382 TUMBLER 7 OZ
 1233 TUMBLER 10 OZ
 0383 TUMBLER 12 OZ

Ø 65 x H 75 mm
 Ø 77 x H 80 mm
 Ø 80 x H 98 mm
 Ø 83 x H 115 mm

STAINLESS STEEL CAN



1254 CAN 12 x 12 cm
 1255 CAN 18 x 18 cm

Ø 120 x H 120 mm
 Ø 180 x H 180 mm

BUCKET



8002 SEAMLESS BUCKET I
 8002CP COVER FOR NO. 8002

Ø 306 x H 266 mm

8003 SEAMLESS BUCKET II
 8003CP COVER FOR NO. 8003

Ø 265 x H 310 mm

MAGNATE



JAR & CONTAINER



- | | |
|----------------------|----------------|
| 0391 JAR 3" | Ø 76 x H 63 mm |
| 0392 JAR 4" | Ø 95 x H 65 mm |
| 0393 JAR 5" x 11 cm | Ø 90 x H110 mm |
| 0394 JAR 4" x 3" | Ø102 x H 80 mm |
| 0395 JAR 4" x 5" | Ø102 x H130 mm |
| 0396 JAR 5" x 5" | Ø123 x H130 mm |
| 0397 JAR 5" x 6 1/2" | Ø123 x H166 mm |
| 0398 JAR 7" x 7" | Ø180 x H180 mm |
| 0399 JAR 6 x 8 cm | Ø 82 x H 82 mm |
| 0400 JAR 8 x 10 cm | Ø 82 x H100 mm |
| 0421 JAR 3 1/8" | Ø 79 x H165 mm |



- | | |
|-----------------------------|------------------|
| 1101 SPICE JAR 50.5 x 82 mm | Ø 50.5 x H 82 mm |
| 1102 CANISTER 88.5 x 116 mm | Ø 88.5 x H116 mm |

GRADUATED MEASURE



- | | |
|---------------------------------|----------------|
| 0201 GRADUATED MEASURE 300 CC | Ø 83 x H114 mm |
| 0202 GRADUATED MEASURE 500 CC | Ø 96 x H124 mm |
| 0203 GRADUATED MEASURE 1,000 CC | Ø126 x H134 mm |
| 0204 GRADUATED MEASURE 2,000 CC | Ø151 x H172 mm |



- | | |
|--|----------------|
| 1248 GRADUATED MEASURE 100 CC (SCALE 25 ml) | Ø 51 x H 59 mm |
| 1247 GRADUATED MEASURE 200 CC (SCALE 40 ml) | Ø 67 x H 66 mm |
| 1248 GRADUATED MEASURE 300 CC (SCALE 50 ml) | Ø 75 x H 80 mm |
| 1249 GRADUATED MEASURE 500 CC (SCALE 100 ml) | Ø 81 x H108 mm |
| 1250 GRADUATED MEASURE 1,000 CC (SCALE 100 ml) | Ø106 x H129 mm |
| 1251 GRADUATED MEASURE 2,000 CC (SCALE 200 ml) | Ø136 x H153 mm |
| 1252 GRADUATED MEASURE 3,000 CC (SCALE 500 ml) | Ø156 x H182 mm |
| 1261 GRADUATED MEASURE 5,000 CC (SCALE 500 ml) | Ø181 x H214 mm |



1250CP - 1261CP COVER FOR 1250 - 1261



MULTI PURPOSE MUG



- | | |
|---------------------------------|----------------|
| 1219 MULTI PURPOSE MUG 125 cc | Ø 60 x H 57 mm |
| 1220 MULTI PURPOSE MUG 250 cc | Ø 78 x H 75 mm |
| 1221 MULTI PURPOSE MUG 500 cc | Ø 93 x H 96 mm |
| 1222 MULTI PURPOSE MUG 1,000 cc | Ø107 x H135 mm |

BELL SHAPED PITCHER



- | | |
|--------------------------------|----------------|
| 0505 BELL SHAPED PITCHER 0.9 L | Ø150 x H170 mm |
| 0506 BELL SHAPED PITCHER 1.8 L | Ø160 x H205 mm |
| 0507 BELL SHAPED PITCHER 2.7 L | Ø195 x H226 mm |

PETRI DISH



- | | |
|-----------------------------|----------------|
| 1223 PETRI DISH 60 x 20 mm | Ø 60 x H20 mm |
| 1224 PETRI DISH 75 x 20 mm | Ø 75 x H20 mm |
| 1225 PETRI DISH 90 x 17 mm | Ø 90 x H17 mm |
| 1226 PETRI DISH 90 x 20 mm | Ø 90 x H20 mm |
| 1227 PETRI DISH 120 x 20 mm | Ø 120 x H20 mm |

MAGNATE